

70-680: MCTS: Windows 7, Configuring

1

You have a computer that runs Windows 7.

You need to configure the computer to meet the following requirements:

- Generate a new security ID (SID) when the computer starts.
- Ensure that the Welcome screen appears when the computer starts.

What should you do?

- A. Run **Sysprep.exe /oobe /generalize**.
- B. Run **Sysprep.exe /audit /generalize**.
- C. Run **Msconfig.exe** and select **Selective startup**.
- D. Run **Msconfig.exe** and select **Diagnostic startup**.

2

You plan to install Windows 7 by using a Windows 7 DVD.

You need to perform an automated installation of Windows 7.

What should you do?

- A. Create an answer file named oobe.xml. Copy the file to a network share.
- B. Create an answer file named winnt.sif. Place the file on a removable drive.
- C. Create an answer file named sysprep.inf. Copy the file to a network share.
- D. Create an answer file named autounattend.xml. Place the file on a removable drive.

3

You have a reference computer that runs Windows 7.

You plan to deploy an image of the computer.

You create an answer file named answer.xml.

You need to ensure that the installation applies the answer file after you deploy the image.

Which command should you run before you capture the image?

- A. **Imagex.exe /append answer.xml /check**
- B. **Imagex.exe /mount answer.xml /verify**
- C. **Sysprep.exe /reboot /audit /unattend:answer.xml**
- D. **Sysprep.exe /generalize /oobe /unattend:answer.xml**

4

You have a reference computer that runs Windows 7.

You plan to create an image of the computer and then deploy the image to 100 computers.

You need to prepare the reference computer for imaging.

What should you do before you create the image?

- A. Run Package Manager.
- B. Run the System Preparation tool.
- C. Install the User State Migration Tool.
- D. Install Windows Automated Installation Kit.

5

You have a Virtual Hard Disk (VHD) and a computer that runs Windows 7. The VHD has Windows 7 installed.

You need to start the computer from the VHD.

What should you do?

- A. From Diskpart.exe, run **Select vdisk**.
- B. From Disk Management, modify the active partition.
- C. Run **Bootcfg.exe** and specify the */default* parameter.
- D. Run **Bcdedit.exe** and modify the Windows Boot Manager settings.

6

You start a computer by using Windows Preinstallation Environment (Windows PE).

You need to dynamically load a network adapter device driver in Windows PE.

What should you do?

- A. Run **Peimg.exe** and specify the device driver path.
- B. Run **Drvload.exe** and specify the device driver path.
- C. Run **Winpeshl.exe** and specify a custom Winpeshl.ini file.
- D. Run **Wpeutil.exe** and specify the InitializeNetwork command.

7

You have a computer that runs Windows 7 Professional. A USB disk is attached to the computer.

You need to ensure that you can enable BitLocker To Go on the USB disk.

What should you do?

- A. Enable Encrypting File System (EFS).
- B. Upgrade the computer to Windows 7 Enterprise.
- C. Initialize the Trusted Platform Module (TPM) hardware.
- D. Obtain a client certificate from an enterprise certification authority (CA).

8

You have a computer that runs Windows Vista. The computer contains a custom application.

You need to export the user state and the settings of the custom application.

What should you do?

- A. Run **Loadstate.exe** and specify the */config* parameter.
- B. Run **Scanstate.exe** and specify the */genconfig* parameter.
- C. Modify the miguser.xml file. Run **Loadstate.exe** and specify the */ui* parameter.
- D. Modify the migapp.xml file. Run **Scanstate.exe** and specify the */i* parameter.

9

You have a computer that runs Windows 7.

You need to configure the computer to download updates from a local Windows Server Update Services (WSUS) server.

What should you do?

- A. From Windows Update, modify the Windows Update settings.
- B. From the local Group Policy, modify the Windows Update settings.
- C. From the System settings, modify the System Protection settings.
- D. From the local Group Policy, modify the Location and Sensors settings.

10

You have a computer that runs Windows 7.

You discover that an application named App1 runs during the startup process.

You need to prevent only App1 from running during startup. Users must be allowed to run App1 manually.

What should you do?

- A. From the local Group Policy, modify the application control policy.
- B. From the local Group Policy, modify the software restriction policy.
- C. From the System Configuration tool, select **Diagnostic Startup**.
- D. From the System Configuration tool, modify the Startup applications.

11

You have a computer that runs Windows Vista.

You install Windows 7 on a new partition on the computer.

You need to ensure that the computer always starts Windows Vista by default.

What should you do?

- A. Run **Bcdedit.exe** and specify the */default* parameter.
- B. Run **Bcdedit.exe** and specify the */bootems* parameter.
- C. Create a boot.ini file in the root of the Windows 7 partition.
- D. Create a boot.ini file in the root of the Windows Vista partition.

12

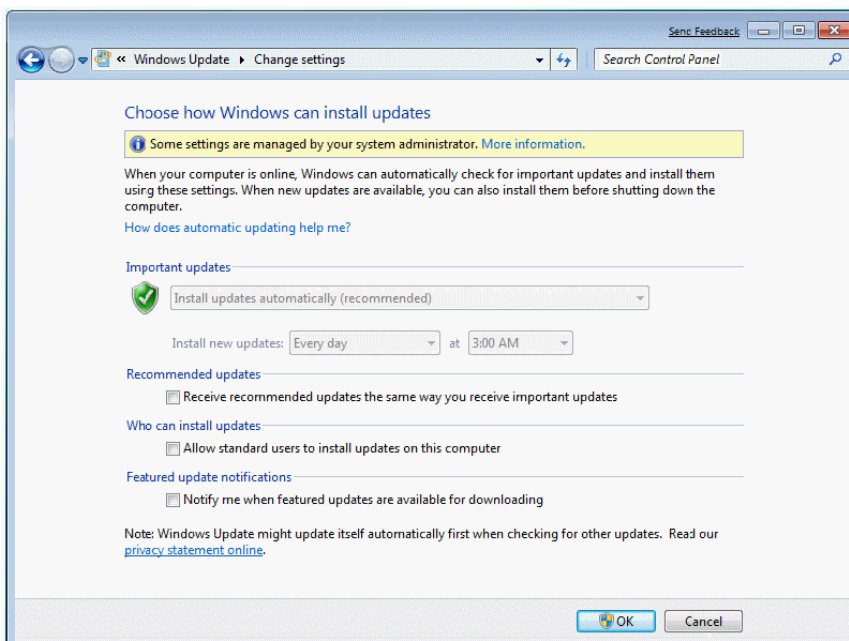
You have a stand-alone computer that runs Windows 7.

You open Windows Update as shown in the exhibit. (Click the **Exhibit** button.)

You need to ensure that you can manually change the Windows Update settings on the computer.

What should you do?

- A. Log on to Windows 7 as member of the Administrators group.
- B. From the local Group Policy, modify the Windows Update settings.
- C. Right-click **Windows Update** and select **Run as administrator**.
- D. Right-click the command prompt, select **Run as administrator**, and then run **Wuapp.exe**.



13

You have a computer that runs Windows 7.

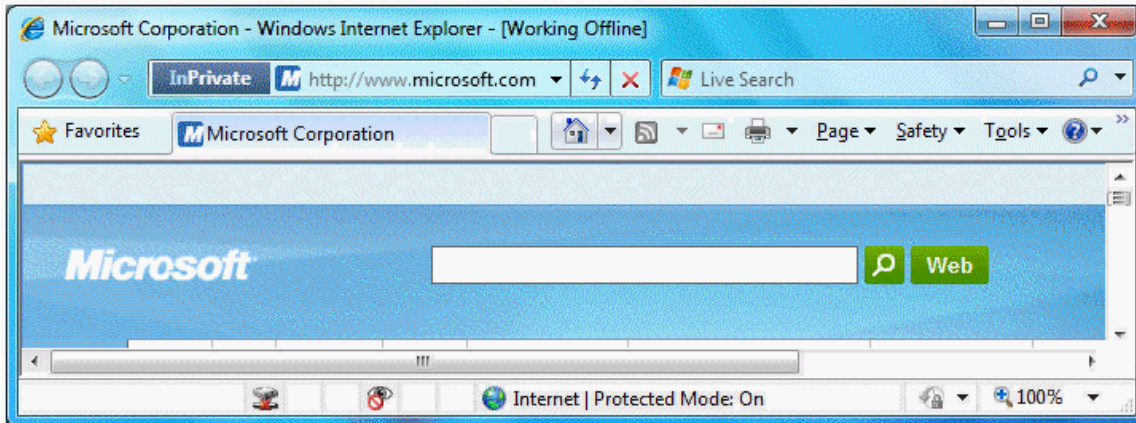
Your company has a corporate intranet Web site.

You open Windows Internet Explorer as shown in the exhibit. (Click the **Exhibit** button.)

You need to ensure that you can access Web pages on both the Internet and the intranet.

What should you do?

- A. From the Tools menu, click **Work Offline**.
- B. From the Safety menu, click **InPrivate Blocking**.
- C. From the Safety menu, click **InPrivate Browsing**.
- D. From the Security tab, add the intranet Web site to the Trusted sites zone.



14

You have a computer that runs Windows 7.

You open the Disk Management snap-in as shown in the exhibit. (Click the **Exhibit** button.)

You need to ensure that you can create a new partition on Disk 0.

What should you do?

- A. Shrink volume C.
- B. Compress volume C.
- C. Convert Disk 0 into a dynamic disk.
- D. Create and initialize a Virtual Hard Disk (VHD).

