

70-270 – MCSE Windows XP Professional

1

You are the desktop administrator for your company. All employees have Windows XP Professional portable computers.

A sales representative named Richard has a local user account on his computer. Richard is issued a portable USB print device. You log on to his computer and disable the restrictions on loading unsigned drivers. All other local computer policies are configured with the default settings.

You restart Richard's computer. Then Richard connects the USB print device, but the printer does not appear in the Printers folder, and Richard cannot print any documents.

You need to ensure that Richard can install the printer and print successfully. What should you do?

- A. Add Richard to the local Print Operators group on his computer.
- B. Add the **/fastdetect** switch in the Boot.ini file on Richard's computer.
- C. Disable the **Prevent users from installing printer drivers** local security policy setting.
- D. Modify the Driver Signing Options, selecting the **Make this action the system default** check box.

2

You are a help desk administrator for your company. You install Windows XP Professional on all portable computers in the marketing department.

Users in this department bring their computers from their offices to a conference room for a weekly marketing meeting. These users need a simple method to manually place their computers in a low-power state without using the Start button. Additionally, they need their computers to start as quickly as possible.

You need to configure the Power Options on the portable computers to meet these requirements. What should you do?

- A. Configure the power button on each computer to enable hibernation.
- B. Configure the computers to enable standby when the lid is closed.
- C. Configure all the computers to use the Portable/Laptop power scheme.
- D. Configure the computers to use the **Minimal Power Management** power scheme.
- E. Configure the Critical Battery Alarm on the computers to hibernate when the battery capacity reaches 3 percent.

3

You are a help desk technician for your company. Stefan and Irene are software developers for your company. Stefan is developing a Web application on his Windows XP Professional computer. The computer is named Stefan132. All client computers use Microsoft Internet Explorer 6.0 or later as their Web browser.

When Irene types **http://Stefan132** in the address bar of her Web browser, she cannot access the Web application. However, Stefan can access the Web application by typing **http://localhost** or **http://Stefan132** in the address bar of his Web browser. He can also access resources on the company network.

When you run the **Ping** command from your computer, you cannot connect to Stefan's computer. When you attempt to access **http://Stefan132** from your computer, Internet Explorer displays "DNS or Server Error."

You need to ensure that Irene can access the Web application on Stefan's computer. First, you establish a Remote Assistance connection to Stefan's computer.

What should you do next on Stefan's computer?

- A. Run the **IPconfig /renew** command.
- B. Stop and then restart the World Wide Web Publishing service.
- C. Ensure that the Everyone group has **Allow - Full Control** permission on the Inetpub folder.
- D. In the properties of the Local Area Connection connection, clear the **Internet Connection Firewall** check box.

4

You are a help desk technician for your company. Stefan and Irene are software developers for the company. Stefan is developing a Web application on his Windows XP Professional computer. The computer is named Stefan132. All client computers use Microsoft Internet Explorer 6.0 or later as their Web browser.

When Irene types **http://Stefan132** in the Address bar of her Web browser, she cannot access the Web application. However, Stefan can access the Web application by typing **http://localhost** or **http://Stefan132** in the Address bar of his Web browser. He can also access resources on the company network.

When you run the **Ping** command on your computer, you cannot connect to Stefan's computer. When you attempt to access **http://Stefan132** from your computer, Internet Explorer displays "DNS or Server Error."

You need to ensure that Irene can access the Web application on Stefan's computer. First, you establish a Remote Assistance connection to Stefan's computer.

What should you do next on Stefan's computer?

- A. Run the **IPconfig /renew** command.
- B. Stop and then restart the World Wide Web Publishing service.
- C. Ensure that the Everyone group has **Allow - Full Control** permission on the Inetpub folder.
- D. In the properties of the Local Area Connection connection, allow a Windows Firewall exception for port 80.

5

You are a network administrator for your company. The company has a main office and a branch office. The branch office has a cable modem connection to the Internet and uses a virtual private network (VPN) connection to access resources on the main office network. The cable modem is connected to a Windows XP Professional computer named Pro1.

You configure Internet Connection Sharing (ICS) on Pro1 to allow users in the branch office to use the VPN connection. ICS sets the network adapter to use the IP address 192.168.0.1.

Several sales representatives in the branch office use wireless network adapters to share files between their client computers. They need access to the VPN connection to upload sales reports to the main office. You install a wireless network adapter in Pro1 and configure it with the appropriate settings for the wireless LAN.

The sales representatives who use the wireless LAN report that they cannot access the VPN connection. However, they are able to connect to resources in the branch office. Users on the wired network do not report any connectivity problems.

The sales representatives need to be able to access the VPN. What should you do?

- A. Configure the wireless network connection on Pro1 so that it has an IP address of 192.168.0.2.
- B. Disable and then re-enable Internet Connection Sharing (ICS) on Pro1.
- C. Create a network bridge between the wired and wireless connections on Pro1.
- D. Clear the **Allow other network users to control or disable the shared Internet connection** check box in the advanced properties of the VPN connection.

6

You are a help desk technician for your company. An employee named Marc is attempting to open a Microsoft Word document named Phonelist.doc by using Internet Explorer. However, when he types **http://Server1/Files/Phonelist.doc** into the address bar in Internet Explorer, he receives the following error message: "404: Page not found."

You verify that Phonelist.doc exists in a shared folder named Files on Server1.

You need to ensure that Marc can access Phonelist.doc by using Internet Explorer. What should you do?

- A. Instruct Marc to run the **IPconfig /flushdns** command on his computer.
- B. Grant Marc's domain user account **Allow - Read** permission on the Files shared folder.
- C. Grant Marc's domain user account **Allow - Read** permission on Phonelist.doc.
- D. Instruct Marc to type **file://Server1/Files/Phonelist.doc** into the address bar in Internet Explorer.

7

You are the administrator of all the Windows XP Professional portable computers in your company. All these computers are members of a Windows 2000 domain.

During the day in the office, users connect their portable computers to the company network. In the evening at home, users use their portable computers to access the Internet.

Users report that when they connect their portable computers to the company network, they are able to access network resources. However, users on the network are not able to connect to shared folders that are defined on the portable computers. You verify that the users have the necessary permissions to connect to the shared folders on the portable computers.

You want to ensure that the portable computers are protected when they are connected to the Internet in the evening. You also want to ensure that users can access shared folders on the portable computers during the day.

What should you do?

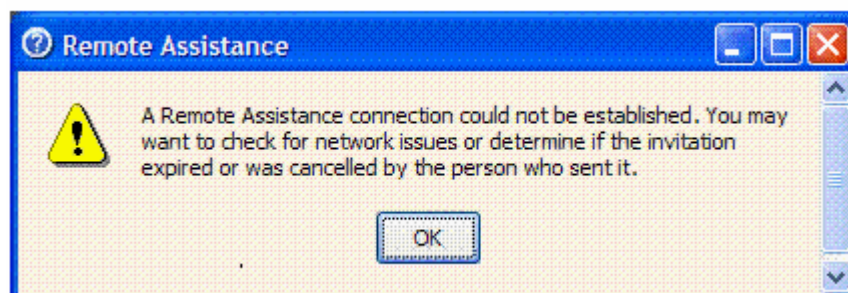
- A. On the Windows XP Professional portable computers, enable Internet Connection Sharing (ICS) Discovery and Control.
- B. Configure the network TCP/IP settings on the Windows XP Professional portable computers to use DHCP. Configure the Alternate Configuration feature to use user-configured addresses.
- C. Link a Group Policy object (GPO) to the company network sites. Configure the GPO to enable **Guest only sharing and security model for local accounts**.
- D. On the Windows XP Professional portable computers, enable Windows Firewall. Configure the local Group Policy object (GPO) to enable **Prohibit the use of ICF on your DNS domain network**.
- E. On the Windows XP Professional portable computers, enable Windows Firewall. Configure the local Group Policy object (GPO) to enable **Prohibit Enabling/Disabling components of a LAN connection**.

8

You are a help desk technician for your company. The company network consists of a single Active Directory domain. All client computers run Windows XP Professional.

The help desk technicians use Remote Assistance to remotely control user sessions to provide online support to users. The users currently use Microsoft Exchange and Microsoft Outlook to submit Remote Assistance invitations to the help desk technicians.

Stephen is a user in the sales department. Stephen has a portable computer and frequently travels to customer locations. While Stephen is in the corporate office, he submits a Remote Assistance invitation to the help desk. When you attempt to answer the invitation and establish the Remote Assistance session, you receive the following error message.



You verify that Stephen's computer is connected to the network and that he did not cancel the invitation. You also verify that the invitation did not expire. You do not experience similar problems when establishing Remote Assistance sessions with other computers.

You need to be able to establish a Remote Assistance session with Stephen's computer. What should you do?

- A. Enable the **Remote Assistance** program exception in Windows Firewall on Stephen's computer.
- B. Add your user account to the Remote Desktop Users group on Stephen's computer.
- C. In the System properties for Stephen's computer, select the **Allow users to connect remotely to this computer** option, and add your user account to the list of allowed users.
- D. In the local security policy for Stephen's computer, grant your user account the **Allow logon through Terminal Services** user right.